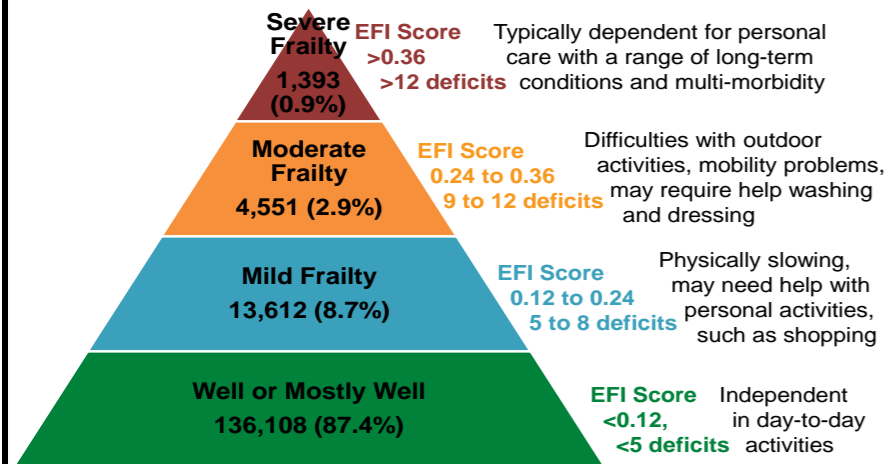


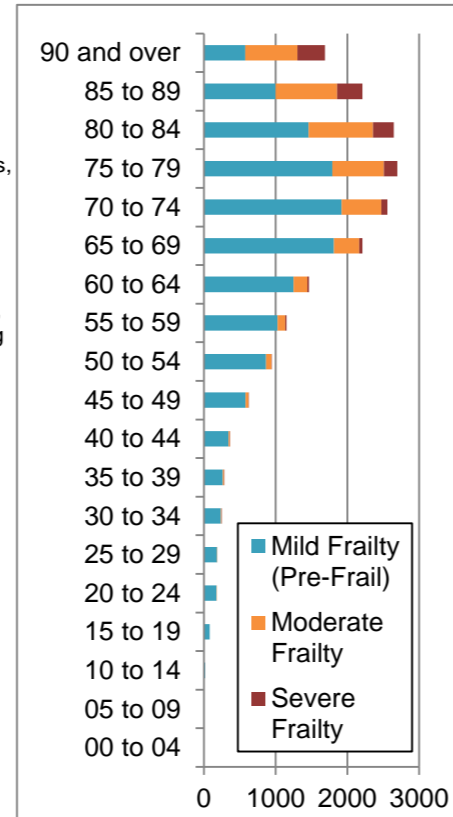
INTEGRATED CARE EXETER RISK STRATIFICATION TOOL - FRAILTY SUMMARY - EXETER (BASED ON 15 PRACTICES), APR-17

NUMBERS BY FRAILTY CATEGORY



Frailty Category	Persons		Males		Females	
	n	%	n	%	n	%
Well/Mostly Well	136108	87.4%	66550	89.8%	69558	85.3%
Mild Frailty	13612	8.7%	5442	7.3%	8170	10.0%
Moderate Frailty	4551	2.9%	1710	2.3%	2841	3.5%
Severe Frailty	1393	0.9%	427	0.6%	966	1.2%

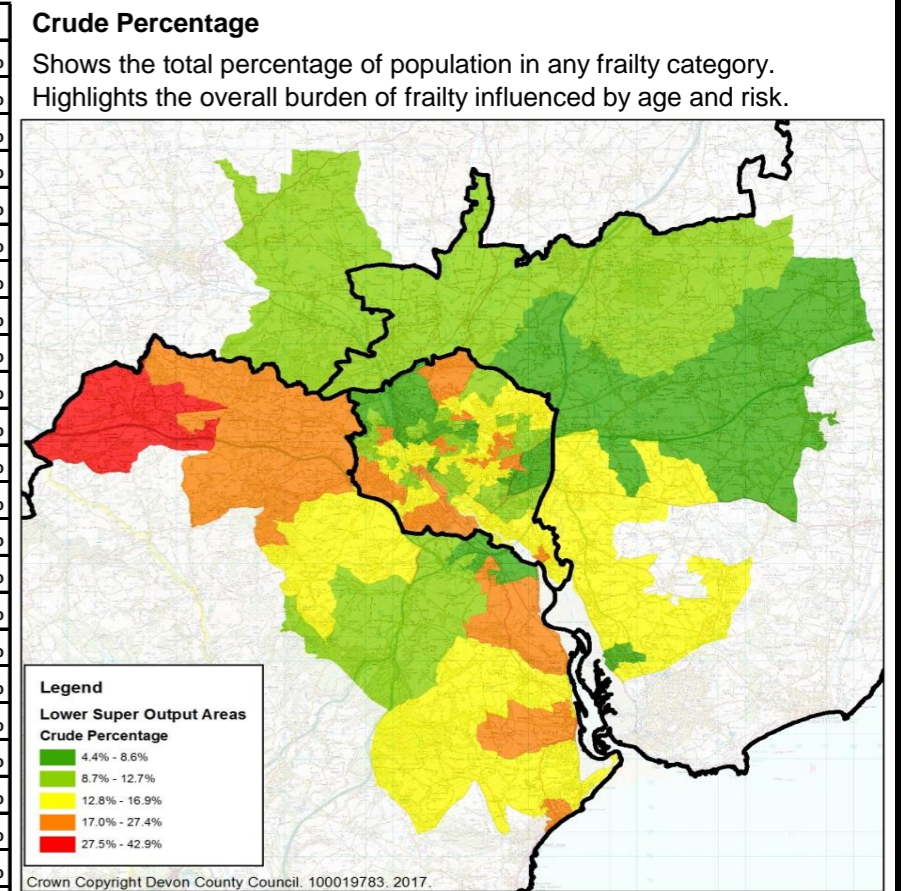
AGE PROFILE



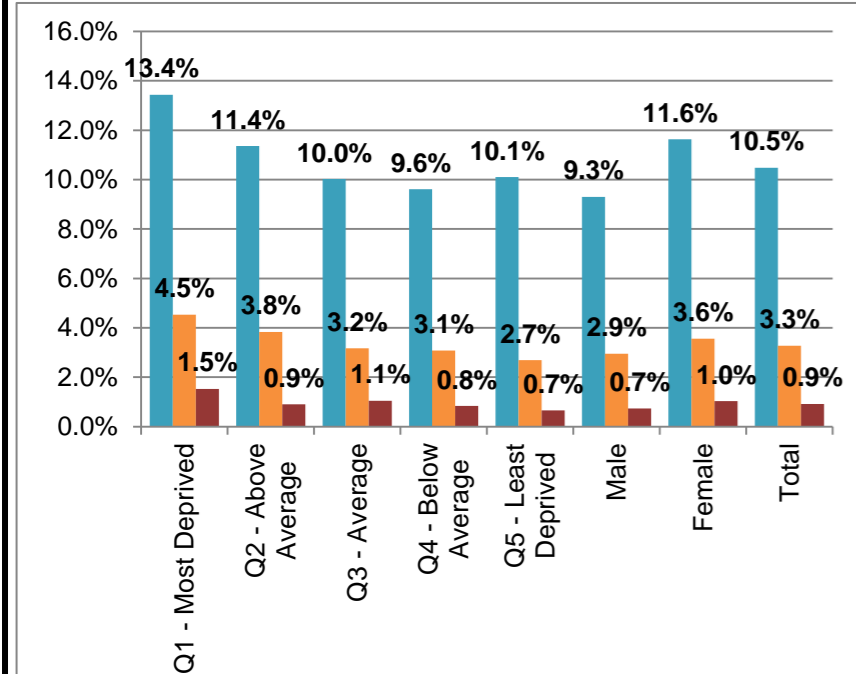
NUMBERS BY FRAILTY RISK FACTOR

Frailty Risk Factor *	Total	All	Male	Female
Respiratory disease	32335	20.8%	20.7%	20.8%
Urinary system disease	24052	15.5%	12.8%	17.8%
Polypharmacy	23742	15.3%	14.4%	16.0%
Hypertension	20375	13.1%	13.2%	13.0%
Hearing impairment	12453	8.0%	8.5%	7.5%
Thyroid disease	11942	7.7%	4.6%	10.5%
Arthritis	11528	7.4%	6.8%	8.0%
Dizziness	10280	6.6%	4.6%	8.4%
Visual impairment	10047	6.5%	5.7%	7.1%
Ischaemic heart disease	8993	5.8%	6.8%	4.8%
Fragility fracture	8707	5.6%	5.6%	5.6%
Dyspnoea	8240	5.3%	4.8%	5.7%
Diabetes	7861	5.0%	5.6%	4.5%
Hypotension / syncope	7285	4.7%	3.7%	5.6%
Sleep disturbance	6341	4.1%	3.6%	4.5%
Housebound	6138	3.9%	3.0%	4.8%
Chronic kidney disease	5994	3.9%	3.5%	4.2%
Falls	5784	3.7%	2.7%	4.6%
Social vulnerability	4337	2.8%	1.9%	3.6%
Osteoporosis	3954	2.5%	0.7%	4.2%
Skin ulcer	3836	2.5%	2.2%	2.7%
Urinary incontinence	3651	2.3%	0.7%	3.9%
Atrial fibrillation	3590	2.3%	2.6%	2.0%
Cerebrovascular disease	3481	2.2%	2.3%	2.2%
Memory & cognitive problems	2936	1.9%	1.6%	2.2%
Weight loss & anorexia	2377	1.5%	1.3%	1.8%
Peripheral vascular disease	2141	1.4%	1.4%	1.3%
Requirement for care	1835	1.2%	1.0%	1.4%
Peptic ulcer	1617	1.0%	1.3%	0.8%
Foot problems	1559	1.0%	0.9%	1.1%
Heart failure	1504	1.0%	1.1%	0.8%
Mobility and transfer problems	1412	0.9%	0.7%	1.1%
Heart valve disease	542	0.3%	0.3%	0.4%
Parkinsonism & tremor	499	0.3%	0.4%	0.3%
Activity limitation	341	0.2%	0.2%	0.2%
Total	155664			

FRAILTY RISK MAPS



Age Standardised Frailty Percentages by Deprivation / Sex *



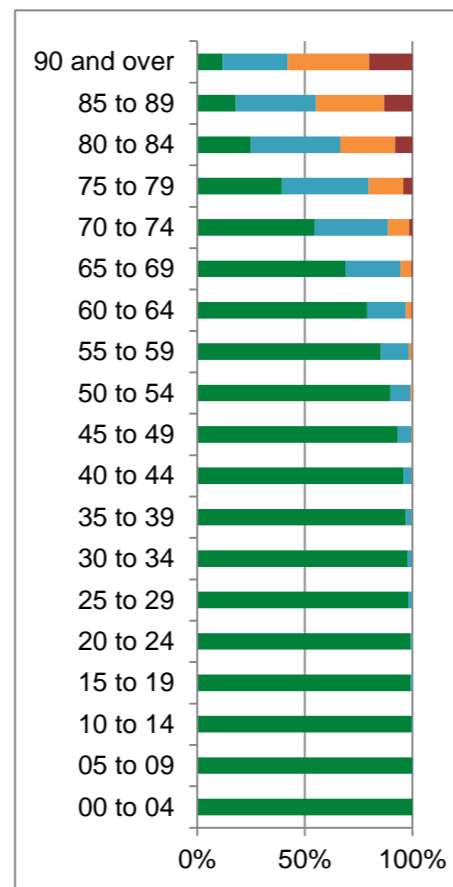
* the above chart shows the pattern for the whole of Exeter, not just this practice

Area Description

Population profile: Typically younger than the Devon and England population profile but with older populations in some areas (e.g. Topsham and Alphington).

Deprivation profile: Overall levels above Devon. Hotspots in city centre, Wonford, Whipton, Beacon Heath and Cowick.

Frailty by Age Group - Percentage



This version produced for Integrated Care Exeter by Simon Chant, Public Health Specialist (Intelligence), Devon County Council, April 2017, with further data analysis by Richard Blackwell and Lesley Gallier, South West Academic Health Science Network.

Sources: EMISWeb, SystmOne, EFI tool, Indices of Deprivation 2015, South West Academic Health Science Network.



Age-Standardised Percentage

Age-adjusted percentage reveals areas with higher rates where people of similar age are more frail and the onset of frailty is earlier.

